

High-level machines for rail cold finishing operations



CUTTING



STRAIGHTENING

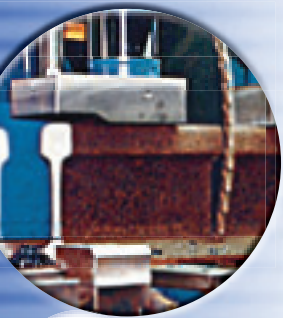


DRILLING



A long experience in developing and manufacturing specialized machines for rail cutting and drilling, as well as for rail straightening destined for:

- **Rail production mills,** for cold finishing operations,
- **Rail welding shops.**



Cutting & drilling of rails

- Strongly built machines equipped with **carbide tipped saw blades and drilling tools**,
- Giving very **short cutting and drilling cycle times**,
- **High finishing quality** of the cut and drilled surfaces, squareness tolerances on the cut rail ends, and tolerances on diameters and position of the holes corresponding to all international rail standards,
- **Pre-programmed** machines allowing quick changes from one program to another,
- **User-friendly HMI**,
- High reliability, long tool life and **reduced maintenance cost**.



Rail Carbide Cutting Machine, SC 800 type

- Automatic cutting cycle: 30s
- Circular saw blade with carbide tips, driven by two hydraulic motors for a regular motion, avoiding vibrations
- Inclined table for moving the saw blade in accordance with rail geometry
- Fully glassed housing
- Quick blade replacement
- Safe backward movement of the saw blade



Length measuring devices for rail lengths:

- Automatic devices of different types assuring positioning of the rails on the saw line conveyors in combination with cutting and drilling cycles,
- Takes into account the real rail temperature on site,
- Conform to tolerances prescribed by the international rail standards





GEISMAR





Gag presses for rail bodies & rail ends

Different types of strongly built
4-way straightening gag presses:

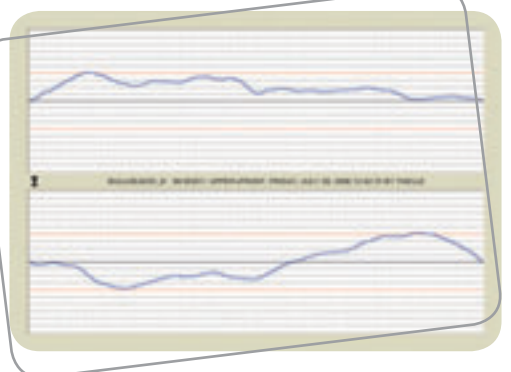
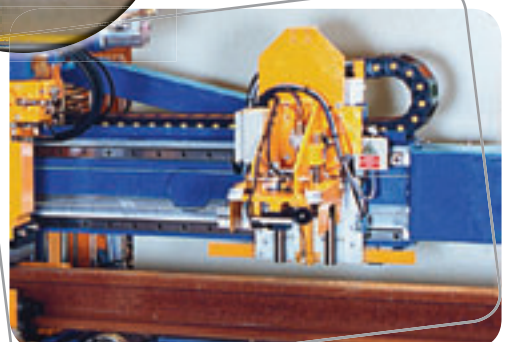
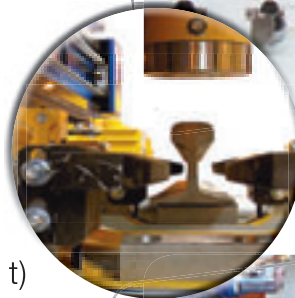
- vertical forces up to 3500 kN (350 t)
- horizontal forces up to 2000 kN (200 t)

Features:

- integrated automatic laser straightness measuring system
- unmatched visibility to the operator
- interchangeable hammers and mobile anvil-blocks
- automated process
- finger tip control on a proportional joystick

Our presses are mounted on mobile platforms, enabling computer assisted movement and positioning of the press to match the rail end or the rail body to be adjusted.

The integrated measuring system, in combination with the automated process of the press mounted on mobile platform, offers the advantage that the rail has not to be moved on the conveyor between the measuring and the straightening operations.



**All our machines are designed
in the Geismar
tradition:**

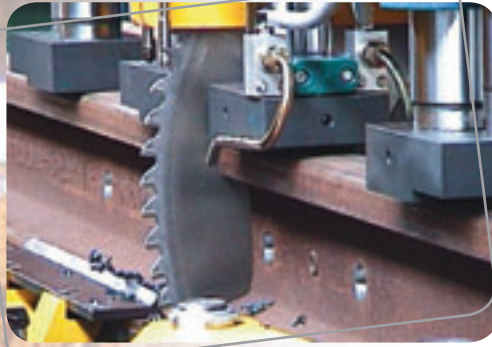


- I Advanced design**
- I High quality components**
- I State-of-the-art
manufacture**
- I High level of
performance and
automation**
- I Safe working
conditions**





CUTTING



STRAIGHTENING



DRILLING



MACHINES FOR RAIL MILLS

for complementary information

contact us +33 (0)1 41 43 40 40



SOCIÉTÉ DES ANCIENS ÉTABLISSEMENTS L. GEISMAR

HEAD OFFICE

GEISMAR
Plant Engineering
Department

113 bis avenue Charles-de-Gaulle
92200 Neuilly-sur-Seine
France

- Tél. : +33 (0)1 41 43 40 40
- Fax : +33 (0)1 46 40 71 70
- E-mail : geismar@geismar.com

www.geismar.com